

CME/CEU 7

AMA PRA  
Category 1 Credits™

# BRIDGING THE GAP

*Integrating clinical care and public health  
to improve maternal and pediatric outcomes*

Presented by San Mateo County Health System and  
San Mateo Medical Center Continuing Medical Education Program  
Hosted by San Mateo County Medical Association

## ACCREDITATION

The San Mateo County Health System is accredited by the Institute for Medical Quality/California Medical Association (IMQ/CMA) to provide continuing medical education for physicians.

The San Mateo County Health System takes responsibility for the content, quality and scientific integrity of this CME activity. The San Mateo County Health System designates this live activity for a maximum of 7.00 AMA PRA Category 1 Credit(s)<sup>™</sup>. Physicians should only claim credit commensurate with the extent of their participation in the activity.

### Nurses:

For the purpose of recertification, the American Nurses Credentialing Center accepts AMA PRA Category 1 Credits<sup>™</sup> issued by organizations accredited by Accreditation Council for Continuing Medical Education (ACCME). For the purpose of relicensure, the California Board of Registered Nursing accepts AMA PRA Category 1 Credits<sup>™</sup> (report the number of hours of credit and fill in "CME Category 1" for the provider number).

### Physician Assistants:

The American Academy of Physician Assistants (AAPA) accepts AMA PRA Category 1 Credits<sup>™</sup> from organizations accredited by ACCME. The National Commission on Certification of Physician Assistants (NCCPA) states that AMA PRA Category 1 Credits<sup>™</sup> are acceptable for continuing medical requirements for recertification.

### Disclosure:

The presenters have attested that they have no relevant financial relationships with commercial interests (any entity producing, marketing, re-selling, or distributing health care goods or services consumed by, or used on, patients). The planners of the activity have also attested to have no relevant financial relationships with commercial interests. The ACCME defines relevant financial relationships as financial relationships within the last 12 months, as well as known financial relationships of spouse, domestic partner, or immediate family member that could create a conflict of interest.

### Additional Information:

Josh Schechtel, MD, MPH  
CME Program Manager  
Continuing Medical Education Program  
San Mateo County Health System  
225 37<sup>th</sup> Avenue, San Mateo, CA 94403  
Phone: (650) 578-7196  
Email: [jschechtel@smcgov.org](mailto:jschechtel@smcgov.org)

The San Mateo County Health System and San Mateo Medical Center Continuing Medical Education Program present the **Inaugural Peninsula Infectious Diseases Conference**. This educational event emphasizes the latest clinical and public health guidance for the prevention, diagnosis, and treatment of maternal and pediatric infectious diseases under the theme of **Bridging the Gap: Integrating Clinical Care and Public Health to Improve Maternal and Pediatric Outcomes**.

## TARGET AUDIENCE

This activity is intended for obstetricians, gynecologists, pediatricians, family physicians, internists, physician assistants, nurse practitioners, nurses, public health practitioners, and other health professionals who are involved in the treatment of maternal and pediatric infections.

## LEARNING OBJECTIVES

After participation in this event, attendees will be able to:

1. Appropriately screen for, test, and treat maternal and pediatric infections in line with the most recent California Department of Public Health (CDPH) and Centers for Disease Control and Prevention (CDC) guidelines.
2. Describe when and how to report Title 17 Reportable Diseases and Conditions to the Public Health Department.
3. Interpret and apply the most recent Advisory Committee for Immunization Practices (ACIP) maternal and pediatric vaccine recommendations and guidelines.
4. Identify regional systems-level resources and strategies for enhanced maternal/infant information-sharing and coordination.

## PHOTO CREDIT

Photos courtesy of San Mateo County Flickr and Tiffany Nicole Tsukuda. Cover page: Purisima Creek Redwoods Open Space Preserve, Woodside, CA. This page: Eugene A. Doran Memorial Bridge, Interstate 280, North of Route 92, San Mateo, CA.

# BRIDGING THE GAP

*Integrating clinical care and public health  
to improve maternal and pediatric outcomes*

## CONFERENCE SCHEDULE\*

TIME	SESSION	PRESENTER
7:30 AM	Registration, Continental Breakfast, Visit Exhibits	
8:15 AM	Welcome Remarks	Matthew Geltmaker, LCSW Dave Pine, JD
8:30 AM	<b>Vaccine-Preventable Congenital Infections and Other Vaccine-Preventable Diseases</b>	Kathleen Harriman, PhD, MPH, RN
9:15 AM	Q&A	
9:25 AM	<b>Zika Virus</b>	Diana E. Ramos, MD, MPH, FACOG
10:10 AM	Q&A	
10:20 AM	Zika Virus Reporting, U.S. Zika Virus Pregnancy and Infant Registry, Resources for Providers, and Public Health Champions	Kendra Benttinen, MS Aja Griffin, MPH Similoluwa Sowunmi, MPH
10:45 AM	Break, Refreshments, Visit Exhibits	
10:55 AM	<b>Influenza</b>	Stuart H. Cohen, MD
11:40 AM	Q&A	
11:50 PM	Lunch, Visit Exhibits	
12:20 PM	<b>Pertussis</b>	Jean A. Wiedeman, MD, PhD
1:05 PM	Q&A	
1:15 PM	<b>Congenital Zika Syndrome, Cytomegalovirus, Herpes Simplex Virus, Toxoplasmosis</b>	Natasha A. Nakra, MD, MS
2:00 PM	Q&A	
2:10 PM	Break, Refreshments, Visit Exhibits	
2:20 PM	Reporting & Introduction to the Perinatal Hepatitis B Prevention Program	Catherine S. Sallenave, MD
2:30 PM	<b>Perinatal Hepatitis B</b>	Natali Aziz, MD, MS
3:15 PM	Q&A	
3:25 PM	Syphilis in San Mateo & Santa Clara Counties	Vivian Levy, MD
3:35 PM	<b>Congenital Syphilis</b>	Julie Stoltey, MD, MPH
4:20 PM	Q&A	
4:30 PM	Closing Remarks	Catherine S. Sallenave, MD

## POST-CONFERENCE ACTIVITIES

4:40 PM San Mateo County Medical Association Mixer

*\*Speakers and topics subject to change.*

REGISTER ONLINE AT:  
<https://peninsula-id-conf.eventbrite.com>

### CONFERENCE REGISTRATION

Early registration is advised – space is limited. Registration is free. Continental breakfast, lunch, and refreshments will be provided. Parking is free.

### CONFERENCE FORMAT

The conference will be offered in multiple formats: didactic sessions, case studies, and questions and answers sessions. The conference will also be recorded and available for online viewing. Presentation slides will be posted online after the conference.

### EXHIBITS

Conference attendees are invited to visit exhibits from regional local health departments, the California Department of Public Health, and community-based organizations during the conference.

### CONFERENCE LOCATION

San Mateo County Medical Association Conference Center  
777 Mariners Island Boulevard, San Mateo, CA 94404  
Phone: (650) 312-1663  
[smcma@smcma.org](mailto:smcma@smcma.org)  
<https://www.smcma.org>

### TRAVEL & TRANSPORTATION

Follow US-101 to CA-92 E to Mariners Island Blvd. Exit 14A from CA-92 E towards Mariners Island Blvd.

The Conference Center is located about 15 to 20 minutes from the San Francisco International Airport; 40 minutes to 1.5 hours from San Francisco, Santa Clara, or Alameda; and 2 to 3 hours from Sacramento, depending on traffic and road conditions.

For attendees who use a ridesharing or ground transportation service, average Bay Area fares and fees range between \$8 - \$161, depending on distance, standard vs. luxury rates, and fixed and demand/surge-based pricing.

### SPECIAL ACCOMMODATIONS

If you have any special needs due to a disability as specified in the Americans with Disabilities Act, please call the Continuing Medical Education Program at (650) 578-7196 for assistance.

### FOR ADDITIONAL INFORMATION

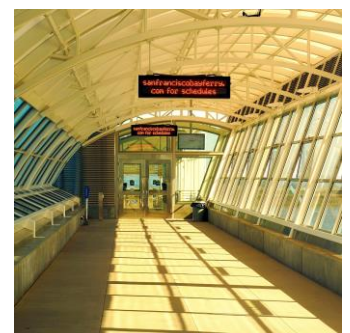
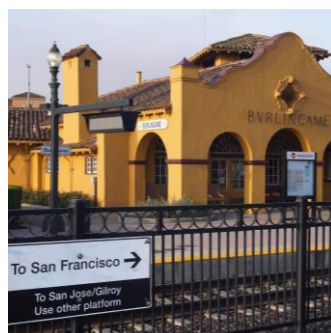
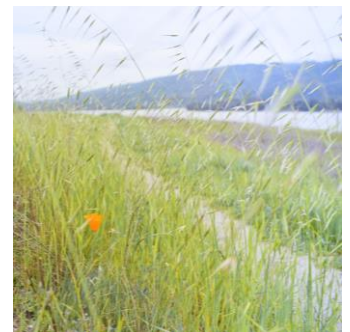
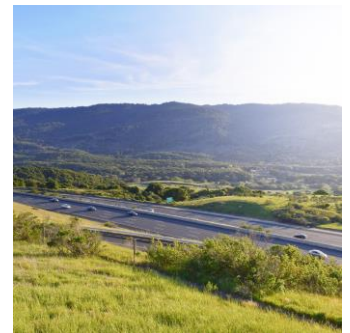
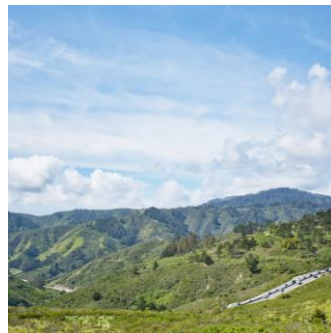
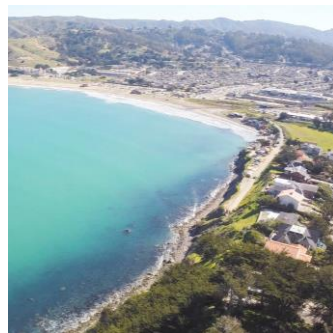
For additional information, please contact Tiffany Nicole Tsukuda, Epidemiologist, at (650) 573-2048 or [c\\_ttsukuda@smcgov.org](mailto:c_ttsukuda@smcgov.org), or visit <https://www.peninsula-id-conf.eventbrite.com>.

# GENERAL INFORMATION



# SAN MATEO COUNTY

San Mateo County is a 744-square mile area stretching from Daly City to East Palo Alto and past Pescadero. More than 741,800 people live here.



## LOCATIONS

*From left to right, top to bottom: Redwood City Port; San Pedro Valley, Montara; Coyote Point Marina; Pigeon Point Lighthouse; beach near Pescadero; Pacifica; California Route 35 – Skyline Boulevard, Santa Cruz Mountains; Ralph D. Percival Memorial Vista Point, Edgewood Road, overlooking Interstate 280; Filoli country estate and botanical garden, Woodside; farming in Pescadero; Purisima Creek Redwoods Open Space Preserve; Cañada Road, Upper Crystal Springs Reservoir; view from Ridge Trail, South San Francisco; South San Francisco town clock; Burlingame Caltrain Station; San Francisco International Airport*

# CONFERENCE FACULTY

## CALIFORNIA DEPARTMENT OF PUBLIC HEALTH



**Kathleen Harriman, PhD, MPH, RN**  
Chief  
Vaccine Preventable Diseases Epidemiology Section  
Immunization Branch



**Diana E. Ramos, MD, MPH, FACOG**  
Public Health Medical Officer  
Maternal, Child and Adolescent Health Division



**Julie Stoltey, MD, MPH**  
Chief  
Office of Science and Policy  
Sexually Transmitted Diseases Control Branch

## STANFORD UNIVERSITY SCHOOL OF MEDICINE



**Natali Aziz, MD, MS**  
Director  
Division of Perinatal Infectious Diseases  
Clinical Associate Professor  
Obstetrics & Gynecology – Maternal Fetal Medicine

## UNIVERSITY OF CALIFORNIA, DAVIS SCHOOL OF MEDICINE



**Stuart H. Cohen, MD**  
Professor and Chief  
Division of Infectious Diseases  
Department of Internal Medicine



**Natasha A. Nakra, MD, MS**  
Clinical Assistant Professor and  
Pediatric Infectious Diseases Specialist  
Division of Pediatric Infectious Diseases, Immunology and Allergy  
Department of Pediatrics



**Jean A. Wiedeman, MD, PhD**  
Associate Professor and  
Pediatric Infectious Disease Specialist  
Division of Pediatric Infectious Diseases, Immunology and Allergy  
Department of Pediatrics

## SPECIAL GUEST



**Dave Pine, JD**  
District 1 Supervisor and Board President  
San Mateo County Board of Supervisors

# BRIDGING THE GAP

*Integrating clinical care and public health  
to improve maternal and pediatric outcomes*



The San Mateo County Health System Public Health, Policy and Planning Division protects the health of all San Mateo County residents by investigating and analyzing communicable diseases and other health issues, engaging in disease treatment and prevention measures, and creating conditions that enable all San Mateo County residents to live healthy lives.



REGISTER TODAY

INAUGURAL PENINSULA  
INFECTIOUS DISEASES  
CONFERENCE

DATE

TUESDAY, MARCH 6, 2018

TIME

8:30 AM - 4:40 PM

LOCATION

SAN MATEO COUNTY MEDICAL ASSOCIATION  
CONFERENCE CENTER  
777 MARINERS ISLAND BLVD  
SAN MATEO, CA 94404

REGISTRATION

[HTTPS://PENINSULA-ID-CONF.EVENTBRITE.COM](https://peninsula-id-conf.eventbrite.com)

SAN MATEO COUNTY HEALTH SYSTEM  
225 37<sup>th</sup> AVENUE  
SAN MATEO, CA 94403



COUNTY OF SAN MATEO  
HEALTH SYSTEM